

Tire Inflator

USER MANUAL



(Please read this manual prior to using this product)

Contents

1.Attention	1
2.Product description	2
3.Operating instruction	2
4.Function introduction	3
5.Recommended tire pressure	3

WARNING

Children must not operate the Tire Inflator alone.
Never use the Tire Inflator in direct sunlight, high temperatures, or high pressure environments.
Keep the Tire Inflator away from water and rain; it is not suitable for use in water.
To avoid damage, excess heat, toxic fumes, fire, or explosion, turn off and allow the Tire Inflator to cool for 30 minutes after 10 minutes of use.
Always turn off the power switch after use.
Before using this product, carefully read all warnings and instructions. Improper use can result in product damage beyond the Seller's responsibility.

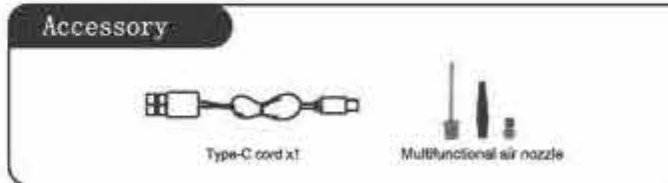
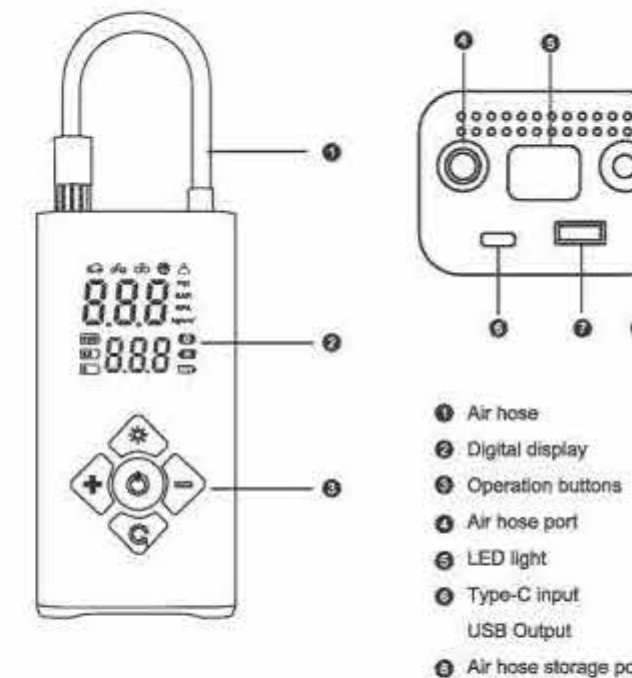
ATTENTION

To minimize the risk of electric shock, refrain from exposing your Tire Inflator to rain. It is recommended to store it indoors and away from any sources of fire.
Attention:
1. This product may experience slight heating during normal operation, which is deemed a typical occurrence.
2. In order to prolong the air pump's lifespan, we do not recommend continuous inflation for more than 10 minutes. Should prolonged use be necessary, intermittent breaks are advised to allow for the cooling down of your tire inflator.

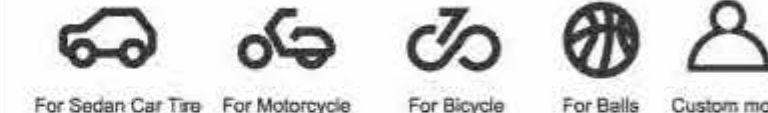
PRODUCT SPECIFICATIONS

Product version	electric pump
Product model	D17-01
Voltage	7.4 V
Power	50W

LAYOUT

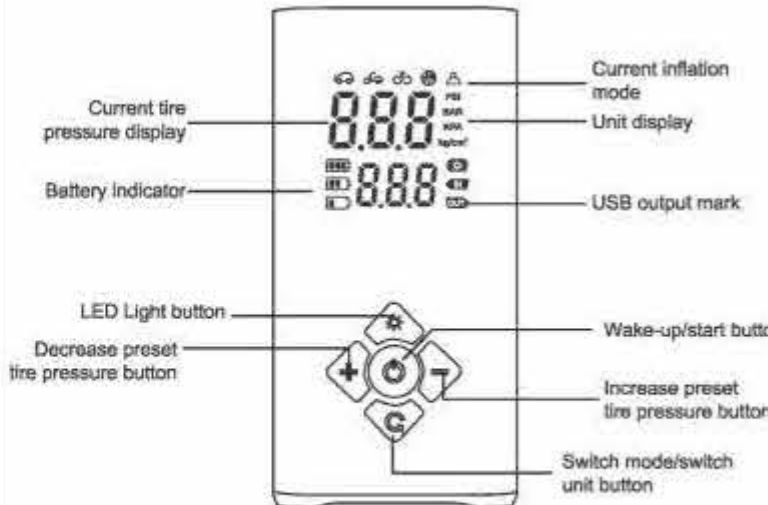


Four modes



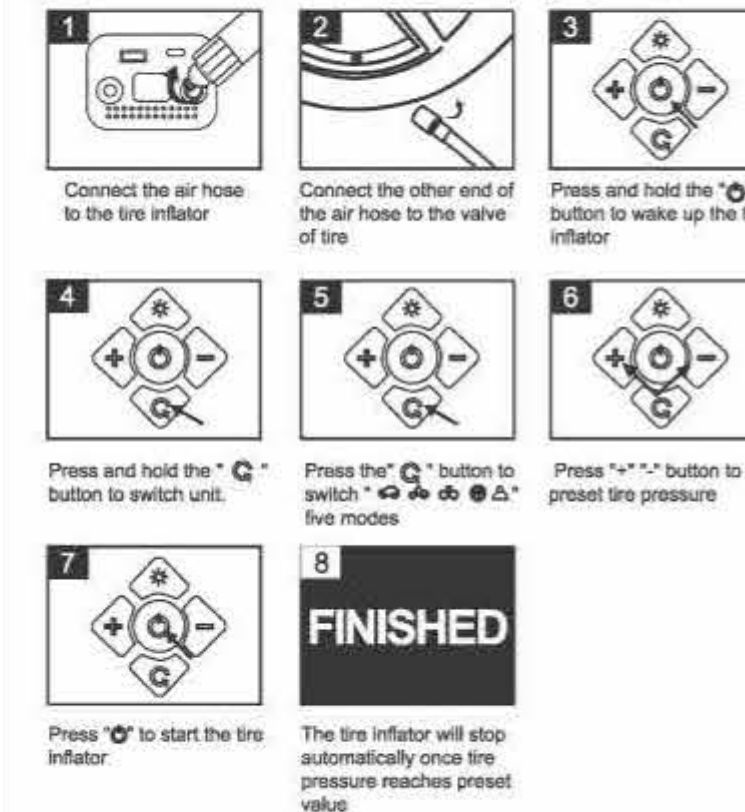
Preset tire pressure

Press and hold "G" to switch the unit. Use the "+" or "-" button to adjust the numerical value, and wait a few seconds after setting for the numbers to stop flashing. Then turn on the inflation switch to start the process. The tire inflator will automatically stop inflating when it reaches the specified air pressure.



OPERATION GUIDE

Instructions for use
*Please charge it fully before use



Reference Pressure

Recommended tire pressure		
Bike	Common bicycle	30-50psi
	Mountain Bike	40-60psi
	Road bike	70-120psi
Motorcycle	Motorcycle	1.8-2.5bar
	Electric bicycle	1.8-2.5bar
Car	Hatchback/Sedan	2.2-2.5bar
Ball	Various balls	1-16psi

Above recommended tire pressure values are for reference only, please refer to the requirements of the product being inflated.



Imported by: Falko BV
Kelvinstraat 16
6902 PW Zevenaar
The Netherlands
Made in China